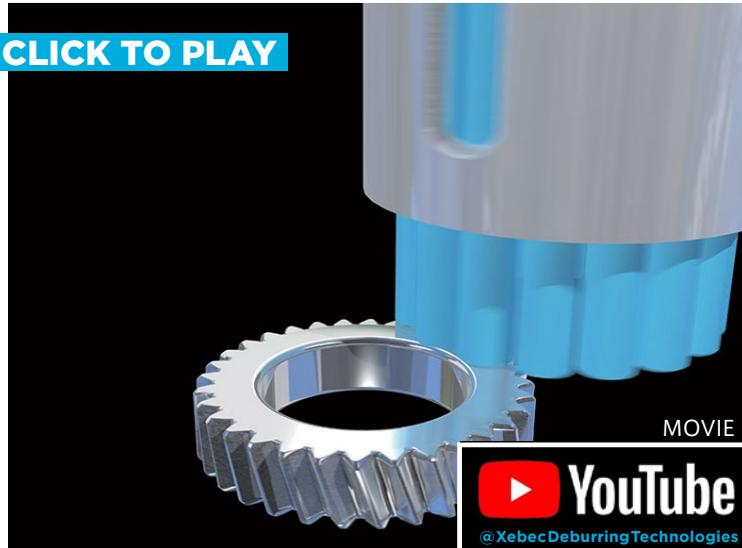


# Pinion gear



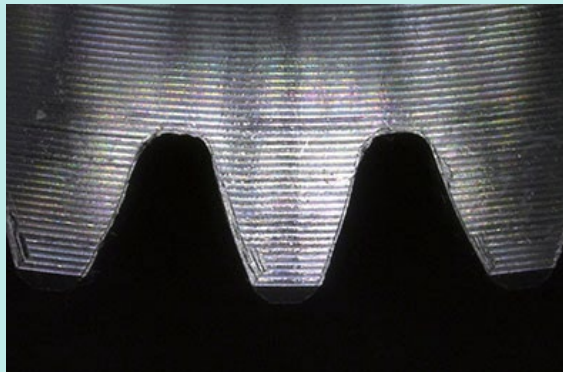
## Workpiece information

Industry	Automotive
Part name	Pinion gear
Material type	S45C
Cutting process	Gear cutting

## Processing conditions

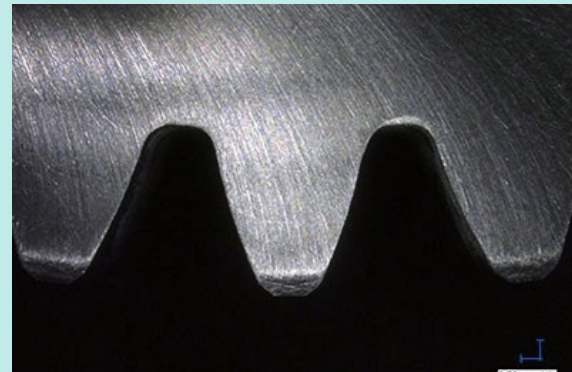
Tool	XEBEC Brush Surface (A31-CB40M) XEBEC Floating Holder (FH-ST12)
Processing detail	Deburring the gear edge face after hobbing process
Spindle Speed (min <sup>-1</sup> )	900
Table Feed (mm/min)	2,400
Depth of cut (mm)	3

### Before

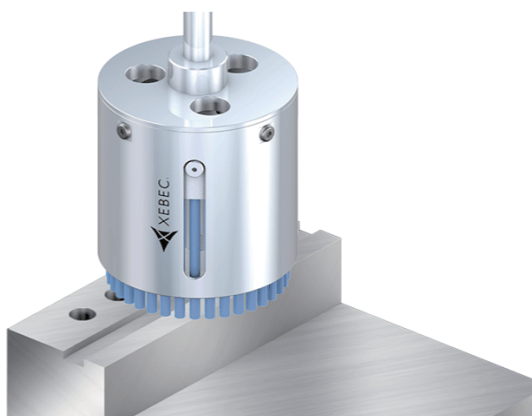


Tool	File
Problem	It took time for manual deburring and edge quality was not stable.

### After



Tool	XEBEC Brush for Surface (A31-CB40M) XEBEC Floating Holder (FH-ST12)
Result	Deburring is automated. Consistent finish in a short time.



Deburring after face-milling, end-milling and drilling  
Cutter mark removal and polishing on surface

## Tool > XEBEC Brush™ Surface

Ideal for deburring, cutter mark removal and polishing on surface

