

Shaft parts

CLICK TO PLAY



Workpiece information

Industry	Automotive
Part name	Shaft parts
Material type	SCM
Cutting process	Threading

Processing conditions

Tool	XEBEC Brush for Surface (A21-CB25M)
Processing detail	Deburring (contouring) unfinished parts of female screw with inner diameter $\Phi 24$.
Spindle Speed (min ⁻¹)	3,000
Table Feed (mm/min)	—

Before

Tool Nylon / wire brush

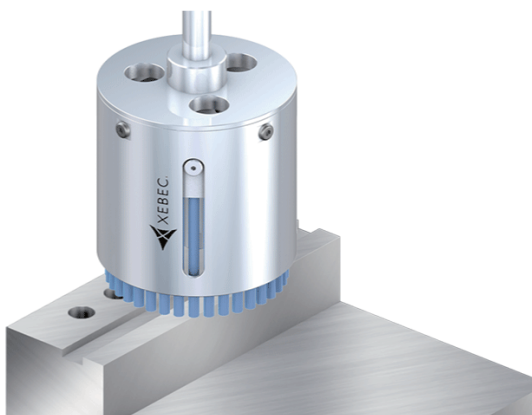
Problem Burrs remained by nylon/wire brushes due to insufficient grinding force and manual deburring was required later.



After

Tool XEBEC Brush for Surface (A21-CB25M)

Result Automated deburring realized with machining center by contouring the cut-out portion of female bolts with brush after processing the tap. Also, surface quality stabilized.



Deburring after face-milling, end-milling and drilling
Cutter mark removal and polishing on surface

Tool XEBEC Brush™ Surface

Ideal for deburring, cutter mark removal and polishing on surface

