

Transmission case (Matching surface)

CLICK TO PLAY



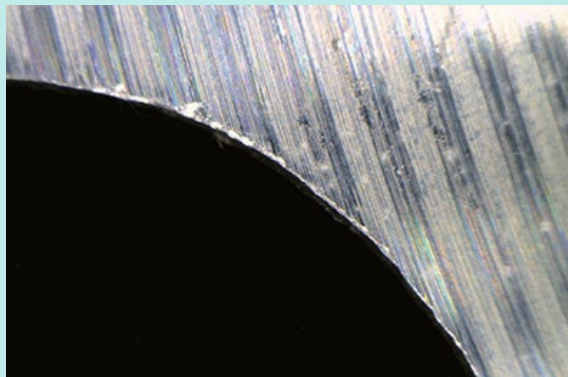
Workpiece information

Industry	Automotive
Part name	Transmission (Matching surface)
Material type	ADC12
Cutting process	Front cutter processing

Processing conditions

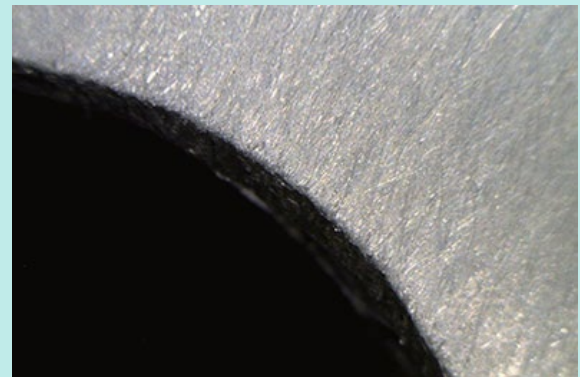
Tool	XEBEC Brush Surface (A11-CB40M)
Processing detail	Deburring of the matching surface after face milling process
Spindle Speed (min ⁻¹)	2,160
Table Feed (mm/min)	7,000
Depth of cut (mm)	0.5

Before

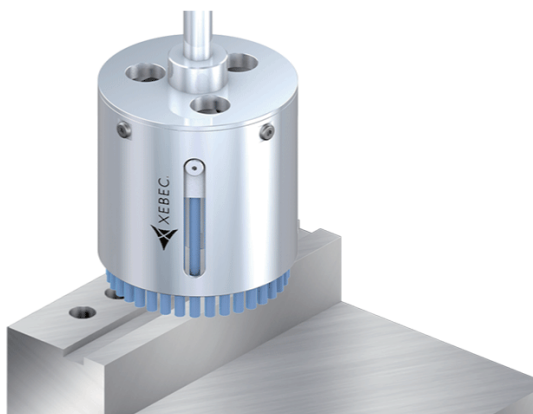


Tool	Abrasive-impregnated nylon brush
Problem	Burrs left due to low grinding power. Additional manual deburring processing was required.

After



Tool	XEBEC Brush Surface (A11-CB40M)
Result	By the introduction of XEBEC Brush, deburring in a shorter time realized.



Deburring after face-milling, end-milling and drilling
Cutter mark removal and polishing on surface

Tool > XEBEC Brush™ Surface

Ideal for deburring, cutter mark removal and polishing on surface

