

Yoke

CLICK TO PLAY



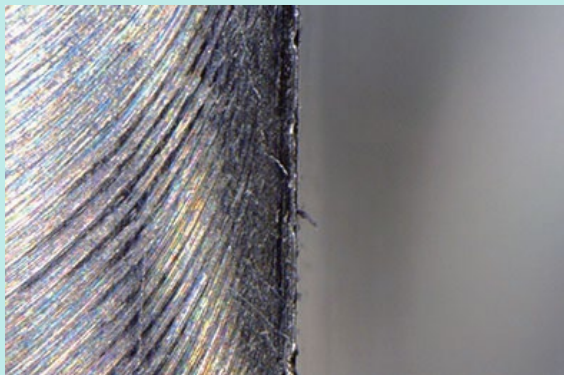
Workpiece information

Industry	Automotive
Part name	Yoke
Material type	SUS430
Cutting process	Chamfering

Processing conditions

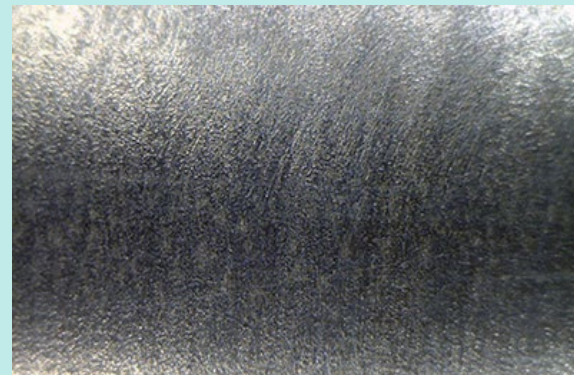
Tool	XEBEC Brush Surface (A31-CB25M)
Processing detail	Deburring the section after chamfering process
Spindle Speed (min ⁻¹)	3,000
Table Feed (mm/min)	—
Depth of cut (mm)	1
Machining time (sec)	—

Before

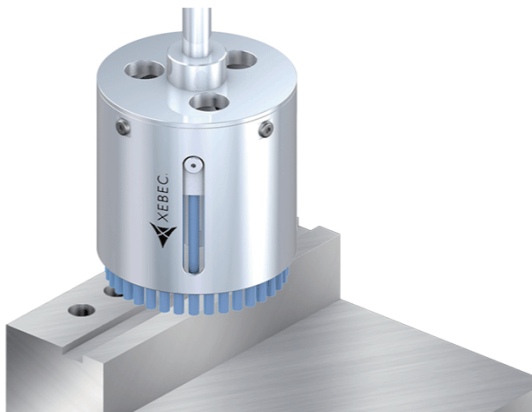


Tool	Cutter, sandpaper
Problem	Manual deburring caused unstable quality and high labor cost.

After



Tool	XEBEC Brush Surface (A31-CB25M)
Result	Fully automated deburring enabled stable quality and shorter processing time. Also the efficiency of processing improved by changing the burr direction by review of pre-process.



Deburring after face-milling, end-milling and drilling
Cutter mark removal and polishing on surface

Tool > XEBEC Brush™ Surface

Ideal for deburring, cutter mark removal and polishing on surface

