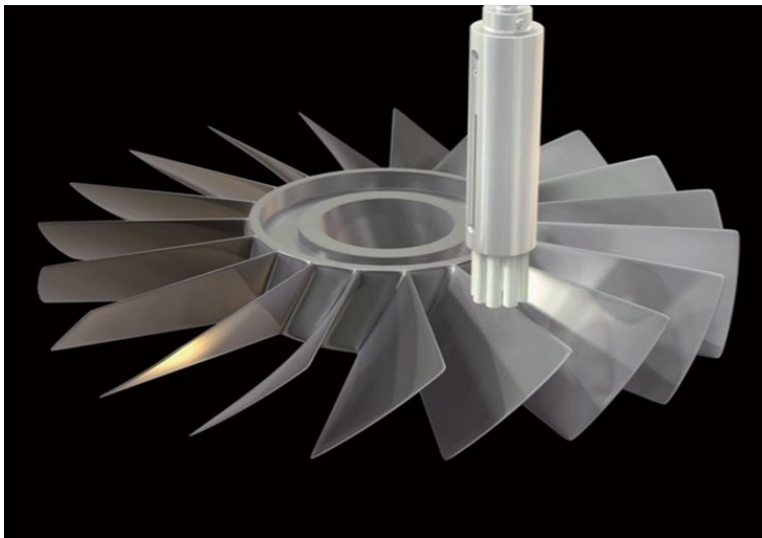


Blisk



Workpiece information

Industry	Aerospace
Part name	Blisk
Material type	Inconel
Cutting process	Ball end mill processing

Processing conditions

Tool	XEBEC Brush Surface (A21-CB25M)
Processing detail	Deburring after ball-end milling process
Spindle Speed (min ⁻¹)	4,000
Table Feed (mm/min)	2,400
Depth of cut (mm)	0.5
Machining time (sec)	—

Before

Tool Grindstone

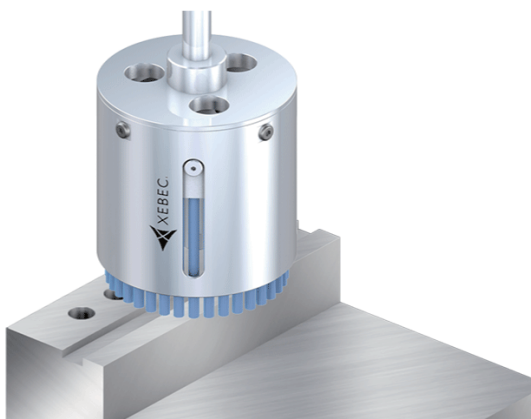
Problem It took time for deburring due to the complicated design of workpiece. Resulted in unstable edge quality.



After

Tool XEBEC Brush Surface (A21-CB25M)

Result By the introduction of automated deburring, 1 operator can operate the multiple machining centers.



Deburring after face-milling, end-milling and drilling
Cutter mark removal and polishing on surface

Tool XEBEC Brush™ Surface

Ideal for deburring, cutter mark removal and polishing on surface

