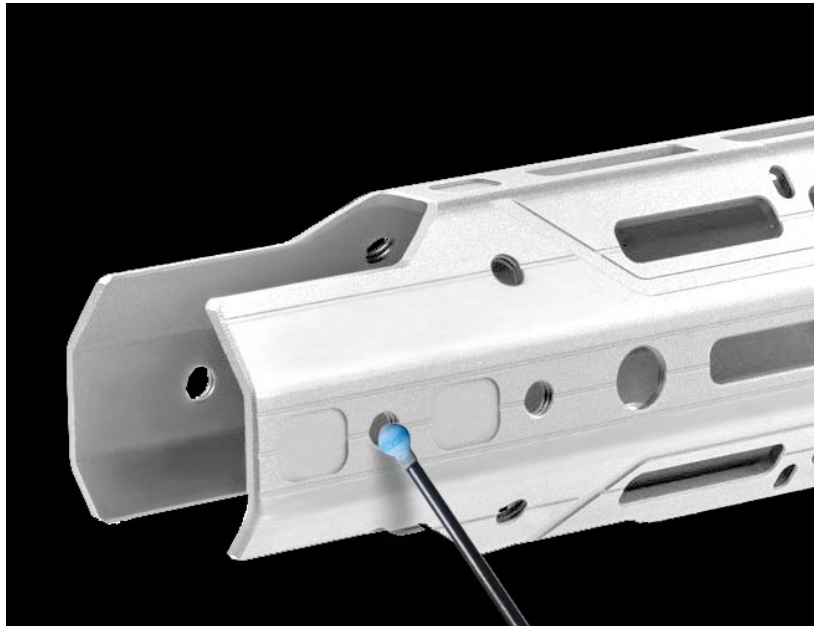


Hand Guard



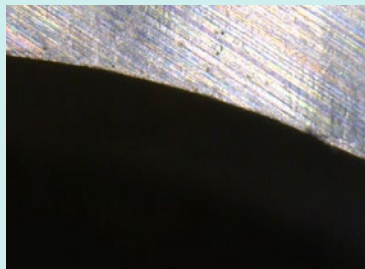
Workpiece information

Industry	Firearms
Part name	Hand Guard
Material type	Aluminum Alloy
Cutting process	Inner/Outer Diameter of Holes

Processing conditions

Tool	XEBEC™ Stone Flexible Shaft (CH-PB-4B)
Processing detail	Deburring of inner and outer edges of holes and channels.
Spindle Speed	9,500 RPM
Depth of Cut	0.016"

Before



After



Hole deburring

Tool > XEBEC Stone™ Flexible Shaft

Flexible shaft allows soft contact with a workpiece and suppresses subtle vibration when being processed.

Ideal for deburring the front and back of a drilled hole both.

