

Cam cap



Workpiece information

Industry	Automotive
Part name	Cam cap
Material type	ADC12
Cutting process	Front cutter processing

Processing conditions

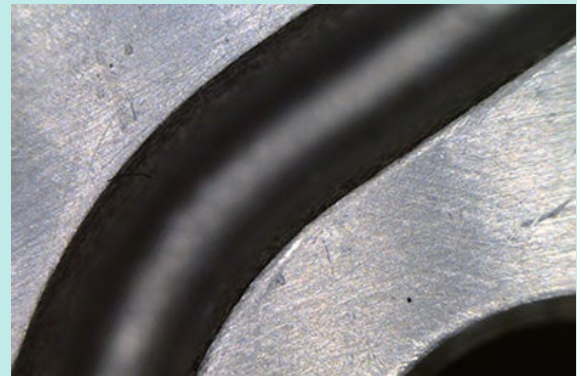
Tool	XEBEC Brush for surface (A11-CB40M)
Processing detail	Deburring the matching surface after face milling process.
Spindle Speed (min ⁻¹)	1,350
Table Feed (mm/min)	2,000
Depth of cut (mm)	0.5

Before

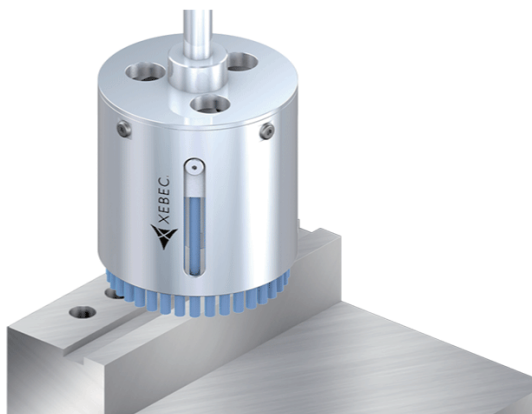


Tool	Abrasive-impregnated nylon brush
Problem	Burrs remained due to insufficient grinding force of nylon brushes and additional manual deburring process required.

After



Tool	XEBEC Brush for Surface (A11-CB40M)
Result	Stable and efficient deburring realized by fully automated deburring with machining centers.



Deburring after face-milling, end-milling and drilling
Cutter mark removal and polishing on surface

Tool > XEBEC Brush™ Surface

Ideal for deburring, cutter mark removal and polishing on surface

