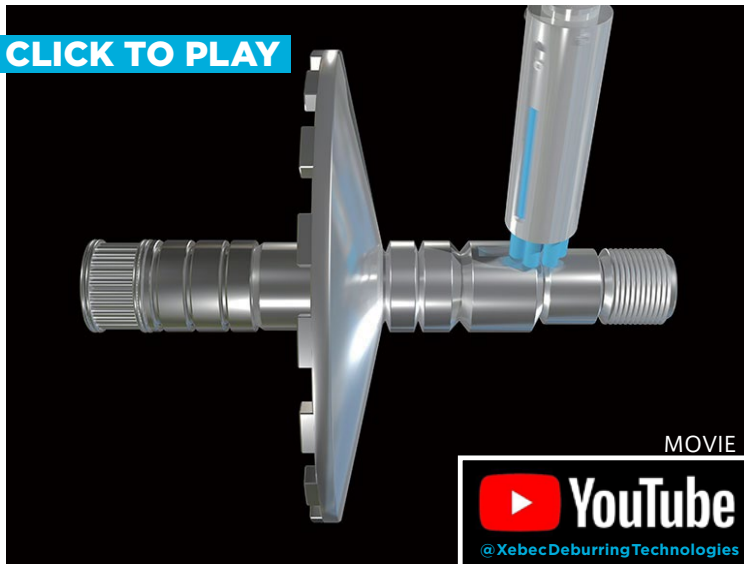


# Pulley



## Workpiece information

Industry	Automotive
Part name	Pulley
Material type	Scr420
Cutting process	Side cutter processing

## Processing conditions

Tool	XEBEC Brush Surface (A31-CB25M)
Processing detail	Deburring the outer edge after side cutter
Spindle Speed (min <sup>-1</sup> )	1,800
Table Feed (mm/min)	1
Depth of cut (mm)	1,800
Machining time (sec)	—

### Before

**Tool** File

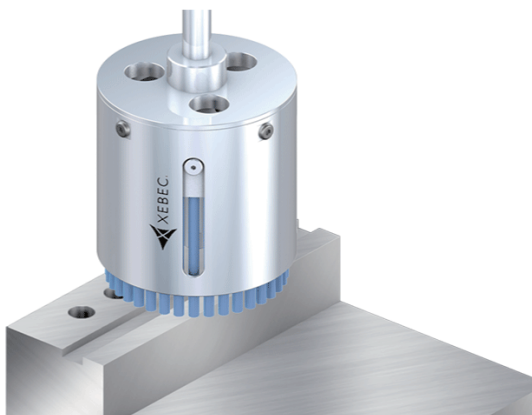
**Problem** It took long time for manual deburring.



### After

**Tool** XEBEC Brush Surface (A31-CB25M)

**Result** Automated deburring with stable quality in a shorter cycle time realized.



Deburring after face-milling, end-milling and drilling  
Cutter mark removal and polishing on surface

## Tool XEBEC Brush™ Surface

Ideal for deburring, cutter mark removal and polishing on surface

