

Artificial hip joint

CLICK TO PLAY



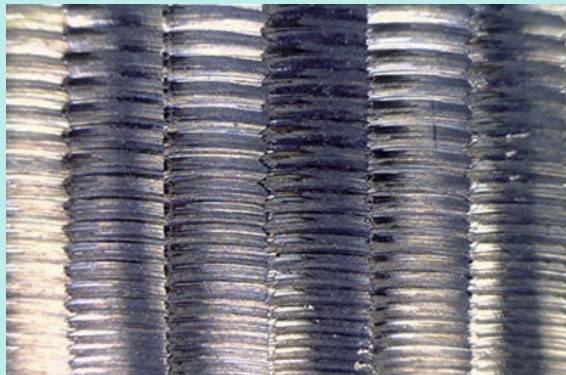
Workpiece information

Industry	Medical
Part name	Artificial hip joint
Material type	Titanium alloy
Cutting process	Ball end mill processing

Processing conditions

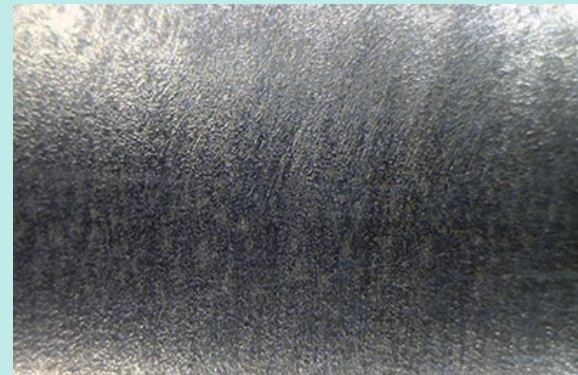
Tool	XEBEC Brush for Surface (A21-CB25M)
Processing detail	Removal of cutter marks after ball-end milling process
Spindle Speed (min ⁻¹)	4,000
Table Feed (mm/min)	1,500
Depth of cut (mm)	0.4

Before

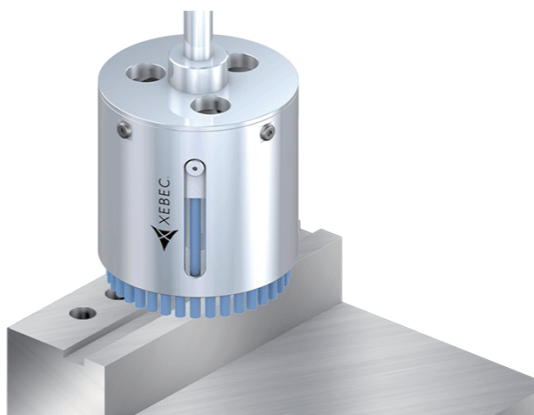


Tool	Sandpaper
Problem	Manual processing caused uneven surface.

After



Tool	XEBEC Brush for Surface (A21-CB25M)
Result	Fully automated polishing enabled complete removal of cutter marks and improvement of surface quality.



Deburring after face-milling, end-milling and drilling
Cutter mark removal and polishing on surface

Tool > XEBEC Brush™ Surface

Ideal for deburring, cutter mark removal and polishing on surface

