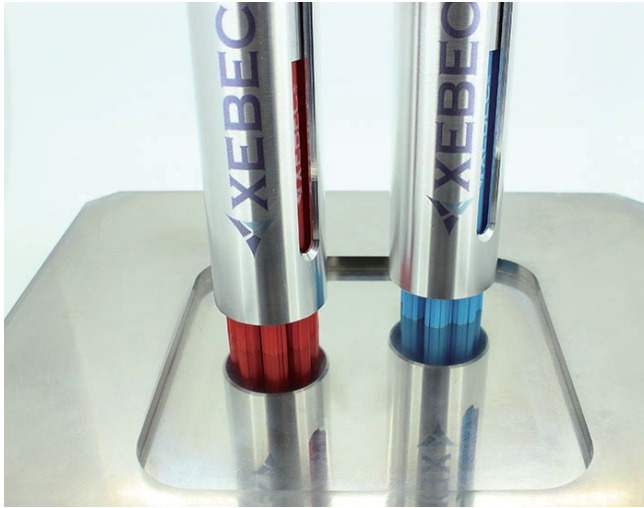


## SUS mold



### Workpiece information

Industry	Mold
Part name	SUS Mold
Material type	SUS304
Cutting process	End mill processing

### Processing conditions

Tool	XEBEC Brush for Surface (A31-CB25M+A11-CB25M)
Processing detail	Removal of cutter marks and polishing after end milling process Tool used : A31-CB25M, Rotation speed : 3200min <sup>-1</sup> Feed : 1500 mm/min, Depth of cut : 0.1mm and Tool used : A11-CB25M, Rotation speed : 4000min <sup>-1</sup> Feed : 6000 mm/min, Depth of cut : 0.3mm
Spindle Speed (min <sup>-1</sup> )	3,200
Table Feed (mm/min)	1,500
Depth of cut (mm)	0.1
Machining time (sec)	81

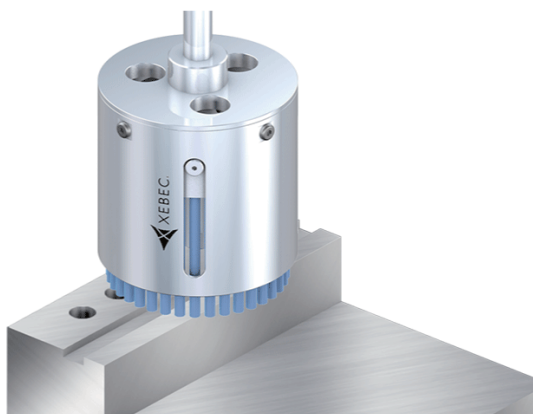
#### Before



#### After



Tool	XEBEC Brush for Surface (A31-CB25M+A11-CB25M)
Result	Surface roughness improved from Ra 0.21μm, Rz 1.56μm to Ra 0.03μm, Rz 0.35μm respectively.



Deburring after face-milling, end-milling and drilling  
Cutter mark removal and polishing on surface

### Tool > XEBEC Brush™ Surface

Ideal for deburring, cutter mark removal and polishing on surface

